

EWM Series

5/8" Hollow Shaft

MAY 1, 2019 and LATER



*Shown in left hand configuration.
Designate "L" when ordering.
EX: EWM4215CL

FEATURES

- 316 Stainless Steel fluid end for superior corrosion protection
- Designed for use in salt water applications
- Solid ceramic plungers with advanced surface finish assure durability and longevity.
- Compact design offers solutions to space limitations
- Nickel-plated crankcase
- 56C mounting flange
- Use motor #639610, 2.5 HP, 50/60 Hz for 4.2 GPM version

SPECIFICATIONS

Pump Model	EWM0515C	EWM0815C	EWM1015C	EWM1615C	EWM2315C	EWM3015C	EWM3715C	EWM4215C
Maximum Volume	0.5 GPM	0.8 GPM	1.1 GPM	1.6 GPM	2.3 GPM	3.0 GPM	3.7 GPM	4.2 GPM
Maximum Discharge Pressure	1,500 PSI							
Maximum Pump Speed	1750 RPM							
Rated Inlet Pressure	125 PSI							
Plunger Bore (in / mm)	.709/18 mm							
Plunger Stroke (in / mm)	.079 in/2mm	.118 in/3mm	.157 in/4mm	.197/5mm	.283/7.2mm	.370/9.4mm	.452/11.5mm	.512/13mm
Crankcase Oil Capacity	8.5 oz.							
Maximum Fluid Temperature	185° F							
Inlet Port Thread	1/2" NPT-F							
Discharge Port Thread	3/8" NPT-F							
Shaft Diameter	5/8" Hollow							
Weight	11.05 lbs.							
Dimensions	7.5" x 7.5" x 5.5"							

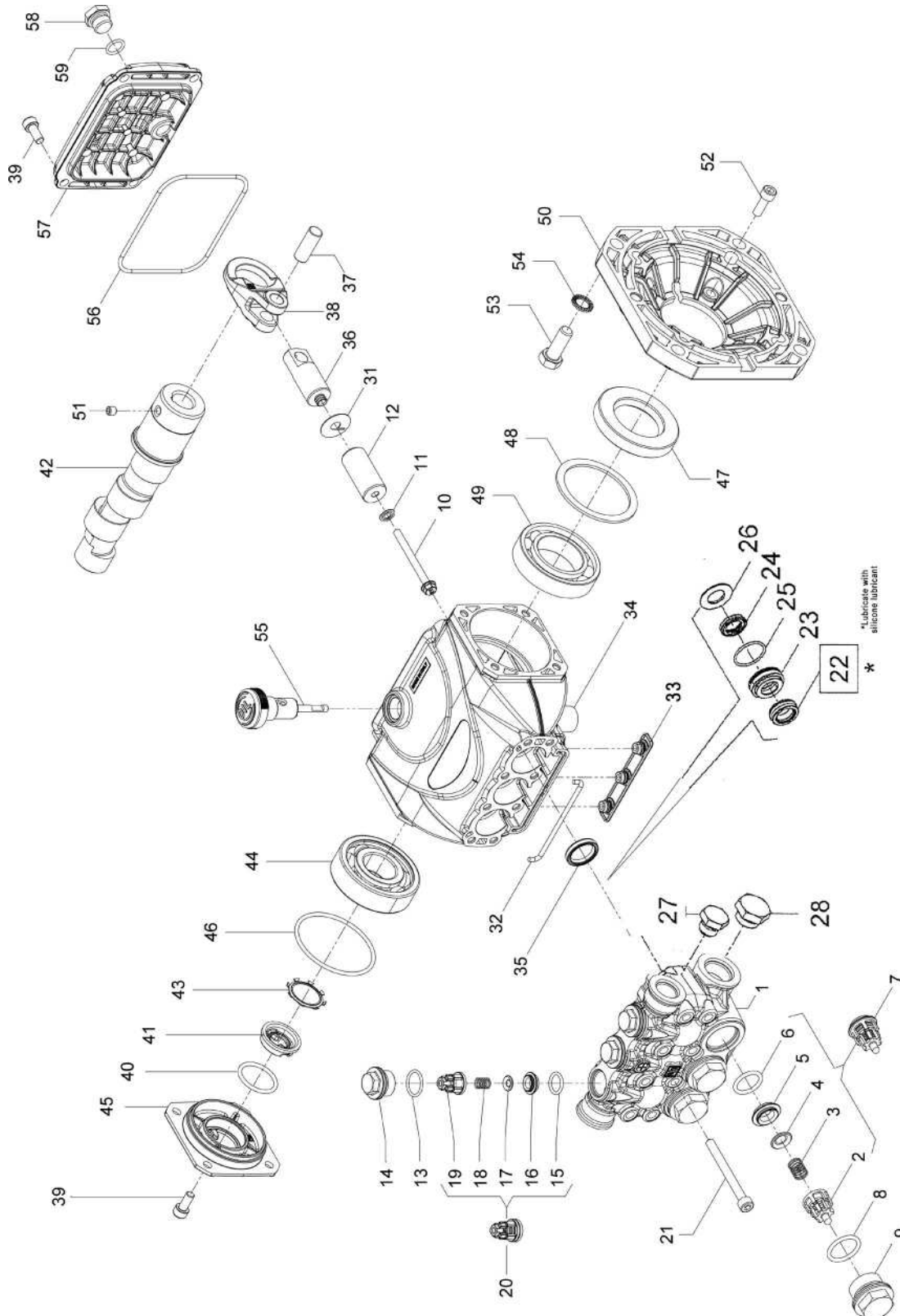
EWM Series

5/8" Hollow Shaft

GENERAL PUMP A member of the Interpump Group

MAY 1, 2019 and LATER

EXPLODED VIEW



EWM Series

5/8" Hollow Shaft

GENERAL PUMP A member of the Interpump Group

MAY 1, 2019 and LATER

PARTS LIST

Item	Part #	Description	QTY.
1	53121536	Manifold	1
2	36202551	Valve Cage	3
3	94737300	Spring, 9.4x14.8mm, SS	3
4	36200176	Spherical Valve	3
5	36203666	Valve Seat, SS	3
6	701115	O-ring, Ø17.13x2.62	3
7	36713001	Valve Assembly	3
8	701002	O-ring, Ø 20.24x2.62	3
9	98221420	Plug, M24x1.5x13.2	3
10	99169000	Plunger Bolt, M5x55	3
11	96690500	Washer, Ø 5x11.5x0.4	3
12	63040509	Plunger, Ø 18x38.5	3
13	701016	O-ring, Ø15.60x1.78	3
14	98213720	Plug, M18x1.5x10	3
15	90367400	O-ring, Ø 12x2	3
16	53211166	Valve Seat	3
17	36211276	Poppet Valve, Outlet	3
18	94733300	Spring, Ø6.8x10.8	3
19	36211151	Valve Cage, Outlet	3
20	36724501	Valve Assembly	3
21	99199200	Screw, M6x60	8
22	90221000	Seal, HP, HT, 18 X 28 X 10	3
23	53211456	Seal Case, 18MM, SS, SW1	3
24	90265050	Seal, LP, 18MM, SW1	3
25	90360400	O-Ring, 70 DURO, BUNA-N, .989 ID X .070 CS	3
26	53211556	Support, Ring, 18MM, SS	3
27	5200063	Plug, 3/8" NPT	3
28	5200062	Plug, 1/2" NPT	3
31	96699000	Washer, Ø 7.5x23x.5	3
32	53210382	Gasket, Ø .3x85	1
33	58210451	Cover, Drip	1
34	53010122	Crankcase Housing, EWM, Nickel Plated	1

Item	Part #	Description	QTY.
35	90159300	Oil Seal, Ø18x24x4	3
36	53050166	Plunger Guide	3
37	97733800	Wrist Pin, Ø10x26.5	3
38	53030022	Connecting Rod	3
39	99183800	Screw, M6x14	8
40	90385900	O-ring, Ø25.07x2.62	1
41	53210851	Oil Sight Glass	1
42	60022465	Crankshaft, 5 mm, 5/8, Hollow	1
	60022965	Crankshaft, 7.2 mm, 5/8, Hollow	
	60023465	Crankshaft, 9.4 mm, 5/8, Hollow	
	60022265	Crankshaft, 4 mm, 5/8, Hollow	
	60028065	Crankshaft, 2 mm, 5/8, Hollow	
	53020365	Crankshaft, 3mm, 5/8, Hollow	
	53020465	Crankshaft, 11.5mm, 5/8, Hollow	
53020565	Crankshaft, 13mm, 5/8, Hollow		
43	90067100	Ring, Stop	1
44	91832800	Crankshaft Bearing	1
45	53150122	Cover, Case	1
46	90389800	O-ring, Ø56.82x2.62	1
47	90167500	Shaft Seal, Ø35x62x10	1
48	60210189	Shaft Spacer	1
49	91846400	Ball Bearing	1
50	10085122	Flange	1
51	99179000	Screw, M6x6	1
52	99186800	Screw, M6x18	4
53	99334500	Screw, 3/8"-16x1	4
54	96710400	Washer, Ø10.5	4
55	98210800	Oil Dipstick	1
56	90391700	O-ring, Ø88.57x2.62	1
57	53160122	Back Cover, Nickel	1
58	98204000	Plug	1
59	90358500	O-ring, Ø10.82x1.78	1

REPAIR KITS

TORQUE SPECS*

KIT NO.	K341	K334	K311	K335	K336	K382	K384	K384C
ITEM NO'S INCLUDED IN KIT	2, 3, 4, 5, 6, (7)	15, 16, 17, 18, 19 (20)	35	8, 9	13, 14	22, 24, 25	22, 23*, 24*, 25, 26	22, 23*, 24*, 25, 26
NUMBER OF ASSEMBLIES IN KIT	3	3	3	3	3	3	1	3

ITEM	Ft-lbs	Nm
9	59.0	80
10	4.4	6
14	44.3	60
21	8.9	12
30	29.5	40
39	7.4	10
52	7.4	10
58	17.4	20

*NOTE: Pusher (p/n 660062) and install guide (p/n 660281) required for installing item 24 in to item 23

*Decrease torque by 20% if threads are lubricated.

